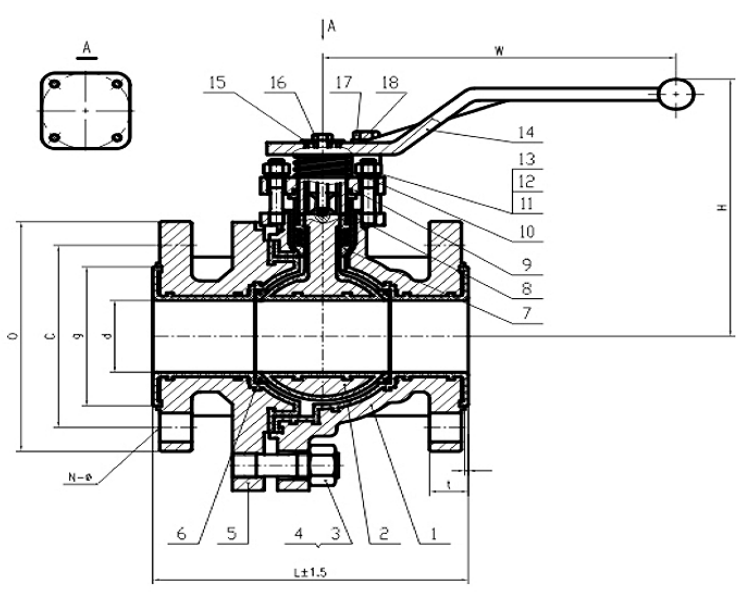


## SERIES 470 (FLANGED) TEFLON COATED BALL VALVE SERIES



### Main Parts And Materials

Part	Name Of Part	Material	Part	Name Of Part	Material
1	Body	ASTM WCB/PFA	10	Spring	ASTM304
2	Ball	ASTM CF8/PFA	11	Bolt	304
3	Bolt	ASTM304	12	Nut	304
4	Nut	ASTM304	13	Sping	ASTM304
5	Bonnet	ASTM WCB/PFA	14	Handwheel	304
6	Seat	PTFE	15	Gasket	304
7	Packing	PTFE	16	Bolt	304
8	Bushing Packing	ASTM304	17	Bolt	304
9	Packing Pre- Ssure Plate	ASTM WCB	18	Locating Rod	304

### ASME B 16.5 –150LB Connection Dimensions

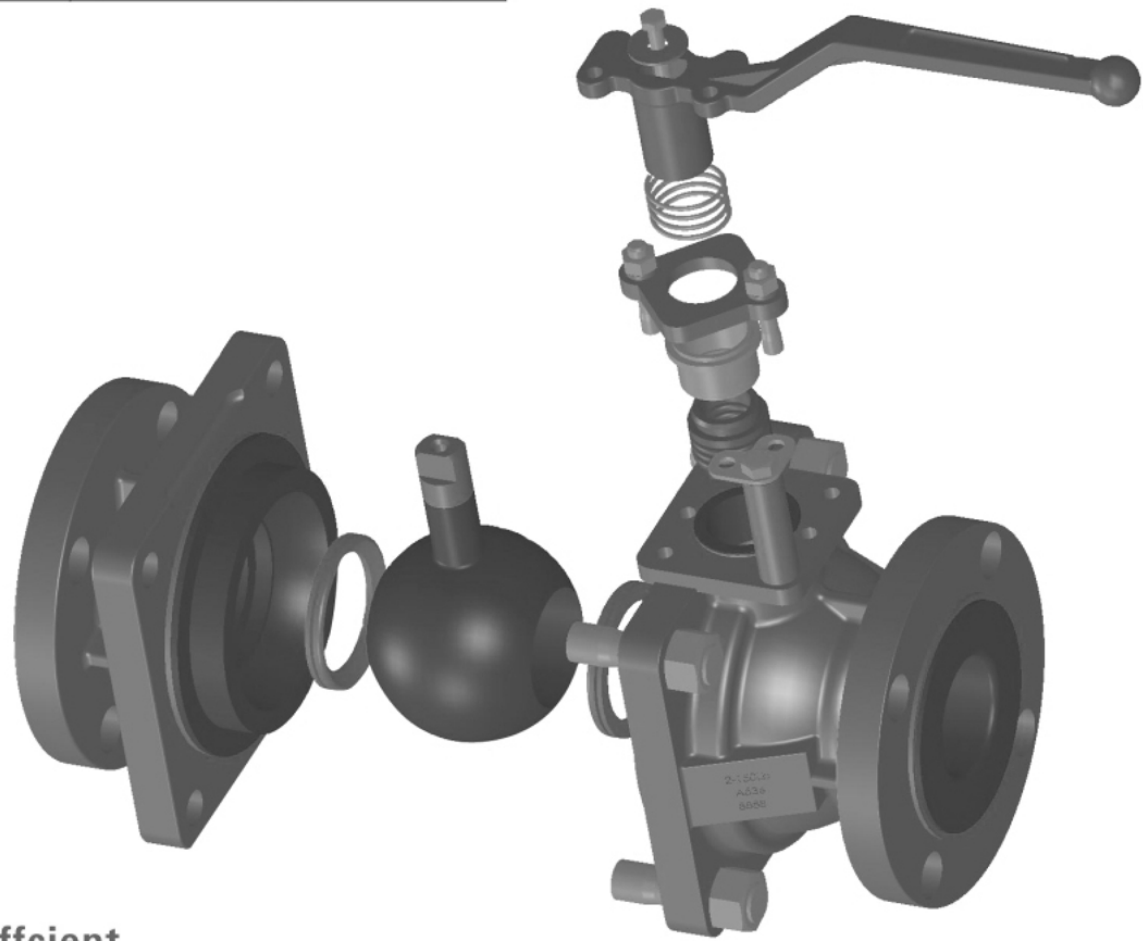
NPS	L	o	c	g	t	f	N-ø	H	W	ISO 5211
1/2"	108	89	60.5	35	11.5	2	4-15	126	160	F05
3/4"	117	98	70	43	13	2	4-15	126	160	F05
1"	127	108	79.5	51	15.5	2	4-15	131	160	F05
1 1/4"	140	117	89	64	16	2	4-15	131	160	F05
1 1/2"	165	127	98.5	73	18	2	4-15	160	200	F07
2"	178	152	120.5	92	22	2	4-19	170	200	F07
3"	203	190	152.5	123	27	2	4-19	230	260	F07
4"	229	229	190.5	157	27	2	8-19	265	313	F10
6"	267	279	241.5	212	31	2	8-22	347	535	F12
8"	292	345	298.5	265	29	2	8-22			F14
10"	330	405	362.0	320	30	2	12-26			F14
12"	610	485	431.8	380	32	2	12-26			F14

## Applicable Field And Medium

Chemical Work	Sulfuric Acid, Nitric Acid, Hydrochloric Acid, Acetic Acid, Phosphoric Acid
Food Factory	Beer, Wine, Sauce, Chocolate
Pharmaceutical Factory	Vitamin Drugs, Calcium Chloride
Gas Factory	Hydrogen Sulfide, Sulfurous Acid Gas (Dry/Wet)
Solvent Factory	Methanol, Benzene, Dimethylbenzene, Ethyl Acetate, Methyl Ethyl Ketone

## Performance Standard

Nominal Diameter	DN15-DN300
End Flanged Standard	JIS 10K ASME 150LB
Max. Working Pressure	150LB
Temperature Range	-20° C ~ 150° C
Seal Testing Pressure	2.2Mpa
Shell Testing Pressure	3.0Mpa
Driving Mode	Operation with Handle, Worm Gear, Pneumatic, Electric
Main Parts Material	Body: WCB+PFA Stem/ball: CF8+PFA Seat: PTFE
Painting	Epoxy Painting



## Cv Flow Coefficient

NPS	1/2"	3/4"	1"	1 1/4"	1 1/2"	2"	2 1/2"	3"	4"	5"	6"	8"	10"	12"
CV	14	14	55	55	210	310	310	684	1546	1546	3262	4565	4565	17500

## Ball Valve Torque Meter

NPS	1/2"	3/4"	1"	1 1/4"	1 1/2"	2"	2 1/2"	3"	4"	5"	6"	8"	10"	12"
N1M	10	10	10	10	20	25	25	85	120	120	320	700	1550	2000