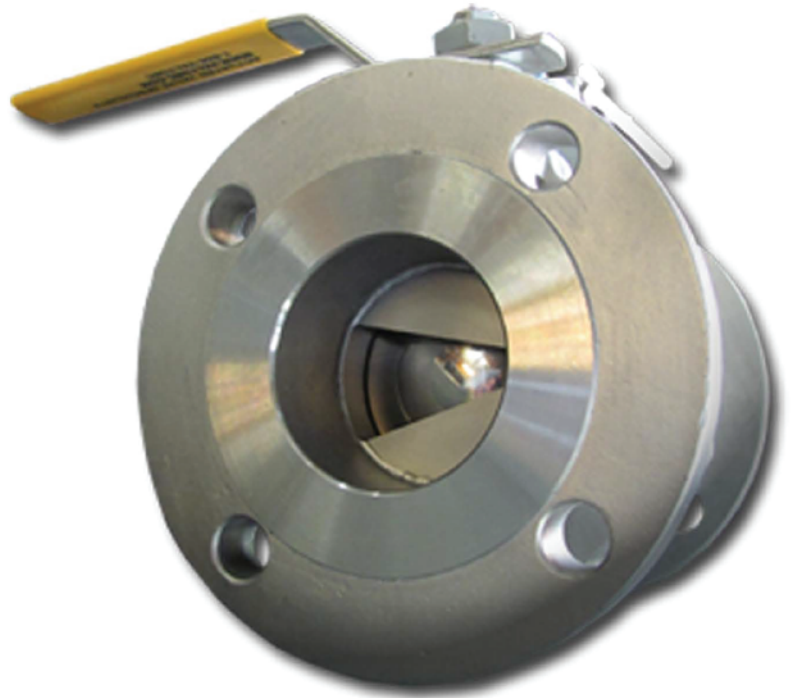


V-PORT / V-BALL VALVE SERIES



**30°, 60° & 90°
CONFIGURATIONS AVAILABLE**

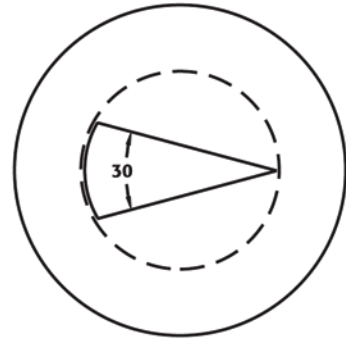
V-PORT BALL VALVE

VALTORC VP SERIES

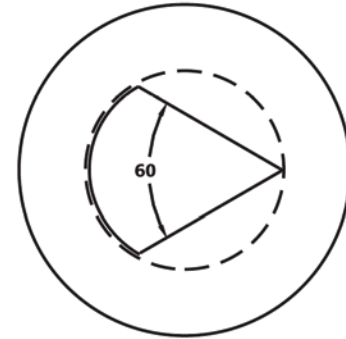
PRECISE FLOW WITH ULTIMATE CONTROL...

VALTORC VP SERIES V-PORT CV CHART

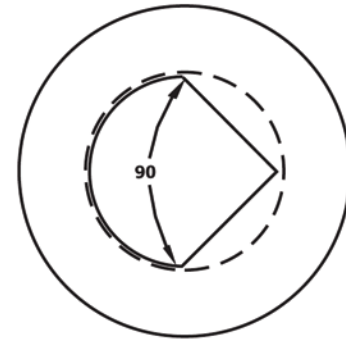
VALVE SIZE	BALL ANGLE	0%	15%	20%	30%	40%	50%	60%	70%	80%	90%	100%
1/2"	30	0	0.1	0.1	0.2	0.3	0.5	0.8	1.1	1.6	2.2	2.6
	60	0	0.1	0.1	0.3	0.5	0.9	1.4	2	3.3	4.4	6
	90	0	0.1	0.2	0.4	0.6	0.9	1.5	2.2	3.8	5.4	6.9
3/4"	30	0	0.1	0.2	0.5	0.7	1.1	1.8	2.4	3.3	4.5	5.4
	60	0	0.1	0.2	0.7	1	1.7	2.8	4	6.5	9	12
	90	0	0.2	0.4	0.8	1.2	2	3.1	4.6	8	11.3	14
1"	30	0	0.1	0.3	0.8	1.3	2.3	3.5	5.1	9.8	8.5	10
	60	0	0.2	0.4	1.1	1.8	3.4	5.3	7.9	12.3	15.3	21
	90	0	0.2	0.6	1.8	3.4	5.1	8.1	11.4	16	21	29
1 1/4"	30	0	0.2	0.4	1.1	2	3.7	5.5	8	10	13	15
	60	0	0.2	0.6	1.8	3	5.5	9.5	12.8	19	26	39
	90	0	0.3	0.8	2	5	8	14	19	28	39	55
1 1/2"	30	0	0.3	0.6	1.6	3	5	7.5	11	14	17	20
	60	0	0.4	0.8	2.5	4	8	13	19	27	40	52
	90	0	0.4	0.9	3.5	7	13	20	31	42	63	78
2"	30	0	0.4	1.2	3.8	6	10	15	23	31	43	60
	60	0	0.4	1.5	4.6	9	16.5	27	39	55	83	110
	90	0	0.5	2	6	12	22	35	45	70	105	135
2 1/2"	30	0	0.4	1	4	8	12	18	28	37	62	75
	60	0	0.4	1.5	5	10	21	34	53	75	103	150
	90	0	0.5	1.7	7	14	28	48	70	106	160	218
3"	30	0	0.5	1.2	4	8	14	23	33	46	65	82
	60	0	0.5	2.5	6	14	25	40	65	91	128	165
	90	0	0.7	3.5	8	18	35	60	90	135	205	310
4"	30	0	0.6	2	6	15	29	48	71	100	130	159
	60	0	0.7	3	11	25	40	59	90	141	212	356
	90	0	1	3.5	16	40	75	125	190	295	442	670
6"	30	0	0.9	3.2	14	33	60	103	155	220	280	350
	60	0	2	5	22	60	110	190	285	416	586	800
	90	0	2	8	35	90	160	280	425	650	970	1480



30 V-Port



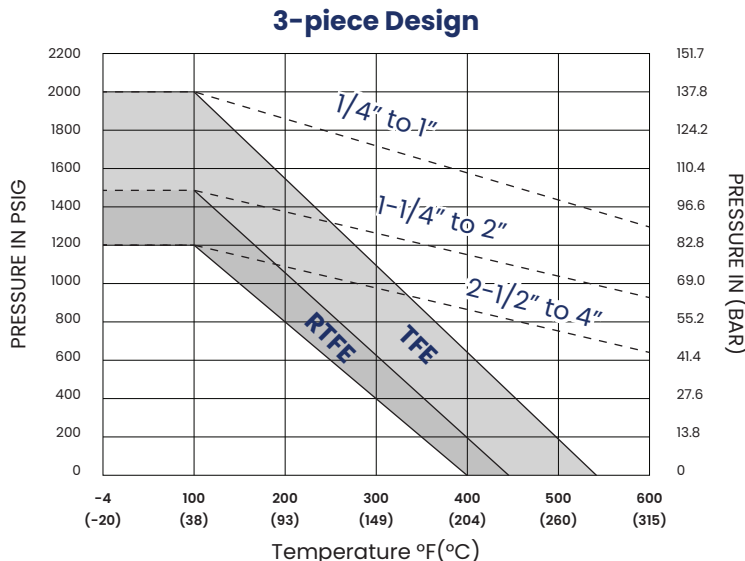
60 V-Port



90 V-Port

* PLEASE CONTACT US AT 1-866-VALTORC FOR VALVES IN ADDITIONAL SIZES

PRESSURE VS. TEMPERATURE CHARTS (1" - 6")



POPULAR PRODUCT!



3 PIECE V-PORT BALL VALVE

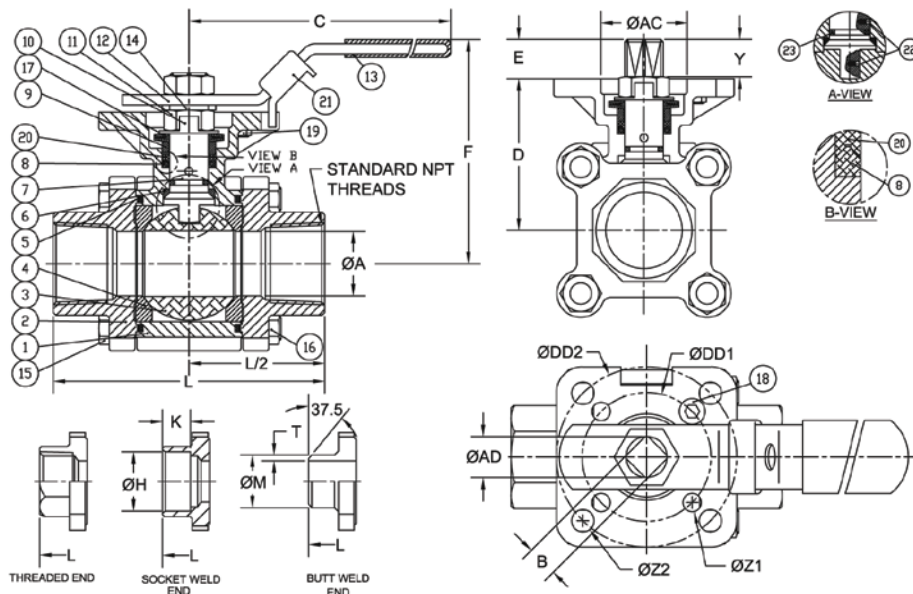
V-PORT BALL VALVE VALTORC VP SERIES

PRECISE FLOW WITH ULTIMATE CONTROL...

VALTORC VP SERIES V-PORT DIMENSIONS & DRAWINGS

“ The **Valtorc VP Series Ball Valves** are ideal for achieving maximum control with the simplicity and sealing features of a ball valve. We offer V-Port Valves **1/2" - 4" in a 3-piece design and 1/2"-6" flanged**. The standard “V” port options are **30, 60, & 90 degrees**.

While they are available as manual valves, **we specialize in automating** them to suit your particular control requirements. Learn more at www.valtorc.com/v-port ”



DIMENSION (IN)

SIZE	ØA	B	C	D	E	F	H	K	L	M	T	Y	AC	AD	DD1	DD2	ØZ2	ØZ1	(LBS)	ISO5211
1/2"	0.59	0.354	5.47	1.66	0.25	3.00	0.85	0.39	2.85	0.85	0.06	0.25	1.07	0.44	1.654	1.969	0.28	0.28	2.0	F04/F05
3/4"	0.79	0.354	5.47	1.83	0.33	3.20	1.07	0.51	3.36	1.07	0.06	0.33	1.07	0.44	1.969	2.756	0.34	0.28	3.0	F05/F07
1"	0.98	0.433	6.50	2.31	0.41	3.86	1.34	0.51	4.15	1.34	0.06	0.41	1.34	0.56	1.969	2.756	0.34	0.28	4.5	F05/F07
1-1/4"	1.26	0.433	6.50	2.46	0.41	4.00	1.69	0.51	4.37	1.68	0.06	0.41	1.34	0.56	1.969	2.756	0.34	0.28	6.0	F05/F07
1-1/2"	1.50	0.551	8.46	3.11	0.53	5.04	1.92	0.51	5.01	1.91	0.06	0.53	1.54	0.74	1.969	2.756	0.34	0.28	10.0	F05/F07
2"	1.97	0.551	8.46	3.42	0.53	5.35	2.40	0.63	5.62	2.38	0.06	0.53	1.54	0.74	1.969	2.756	0.35	0.30	13.0	F05/F07
2-1/2"	2.56	0.748	10.31	4.28	0.66	6.60	2.89	0.63	7.28	3.00	N/A	0.66	2.09	0.94	2.756	4.016	0.47	0.39	26.0	F07/F10
3"	3.15	0.748	10.31	4.63	0.70	6.96	3.54	0.63	8.07	3.54	N/A	0.70	2.09	0.94	2.756	4.016	0.47	0.39	34.0	F07/F10
4"	3.94	0.748	12.28	5.26	0.66	7.59	4.54	0.79	9.45	4.57	N/A	0.66	2.09	0.94	2.756	4.016	0.47	0.39	52.0	F07/F10

STAINLESS STEEL, PVC, PVDF, BRASS & CARBON STEEL V-PORT VALVES

WITH VARIOUS MATERIALS AND SIZES YOU CAN GET THE EXACT CONFIGURATION YOU NEED!



STAINLESS STEEL



PVC



PVDF



BRASS

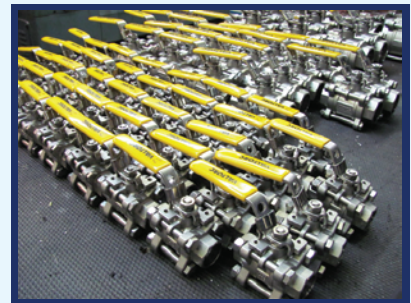


VALTORC® ALSO OFFERS:

- FULL PORT BRASS BALL VALVES
- 3-WAY BRASS BALL VALVES
- FULL PORT STAINLESS BALL VALVES
- 3-PC STAINLESS STEEL BALL VALVES
- SS SANITARY TRI-CLAMP BALL VALVES
- STAINLESS STEEL FLANGED VALVES
- PVC/CPVC BALL VALVES
- 3-WAY PVC BALL VALVES
- BUTTERFLY VALVES, WAFER & LUG STYLE
- TRIPLE OFFSET BUTTERFLY VALVES
- PNEUMATIC ACTUATORS
- ELECTRIC ACTUATORS
- LIMIT SWITCHES
- VALVE POSITIONERS
- GEAR OVERRIDES
- LOCKOUTS
- PILOT VALVES
- MOUNTING KITS
- I/P TRANSDUCERS
- POULTRY SCALDER PANEL
- SOLENOID VALVES
- INDUSTRIAL VALVES
- BALL VALVES
- BUTTERFLY VALVES
- KNIFE GATE VALVES
- PLUG VALVES
- SANITARY VALVES
- SAFETY RELIEF
- PVC VALVES
- V-PORT BALL VALVES

WHY CHOOSE VALTORC® V-PORT BALL VALVES?

- SIMPLICITY - VERY LOW MAINTENANCE COSTS
- TIGHT SHUTOFF - EXCEEDING CLASS VI AND BUBBLE-TIGHT
- HIGH RANGEABILITY - REPEATABLE CONTROL THROUGH 95% TRAVEL
- LOW WEIGHT - ABOUT 30% LIGHTER THAN GLOBE CONTROL VALVE
- LOW FLOW CONTROL - CV AS LOW AS 0.07
- HIGH TEMPERATURE - UP TO 1,000°F
- HIGHER PRESSURE RATING - 1000PSI AND HIGHER



VALTORC® INTERNATIONAL IS A MAJOR SUPPLIER IN THE INDUSTRIAL CONTROL AND ACTUATED VALVES MARKET WORLDWIDE SUPPLYING ARRA COMPLIANT VALVES AND MANY MORE PRODUCTS SINCE 1980. WE HAVE A BROAD PRODUCT LINE OF STANDARD CONTROL DEVICES TO MEET EVEN THE MOST DEMANDING CUSTOMER REQUIREMENTS. CONTACT US TODAY TO LEARN MORE!

CONTACT US TODAY!

TOLL FREE: 1-866-VALTORC
LOCAL: 770-423-7100
FAX: 770-499-7483

ORDER ONLINE @

WWW.VALTORC.COM
SALES@VALTORC.COM